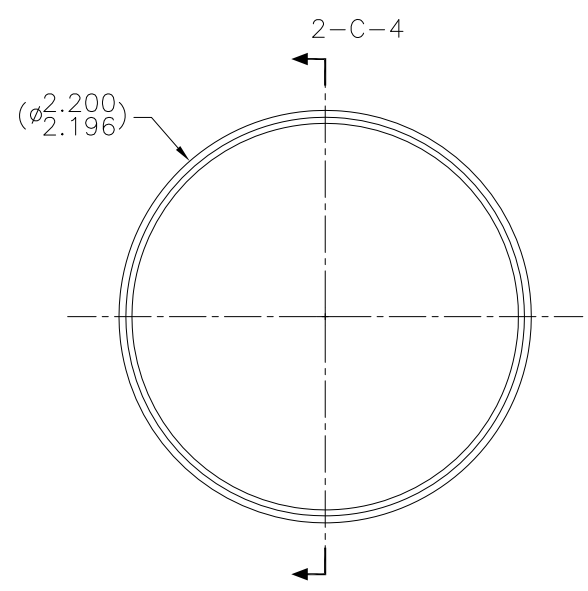
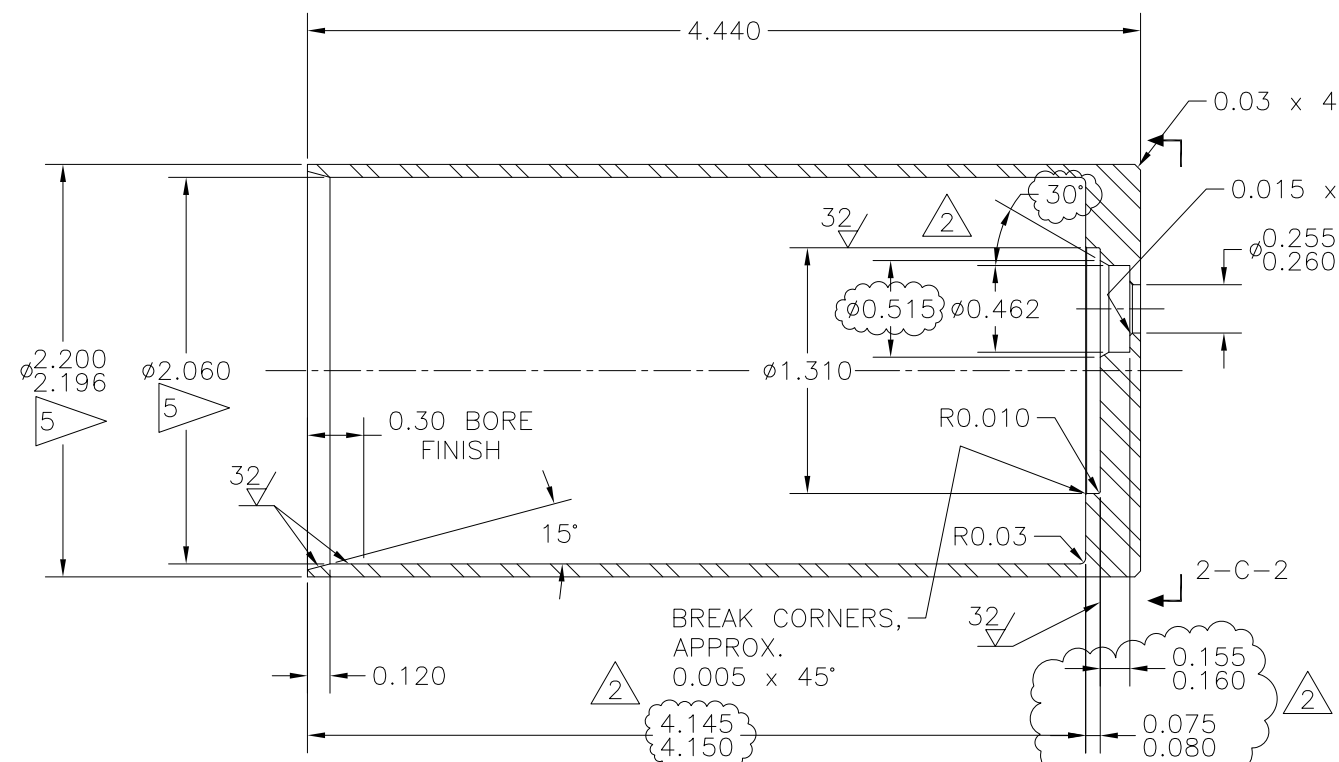


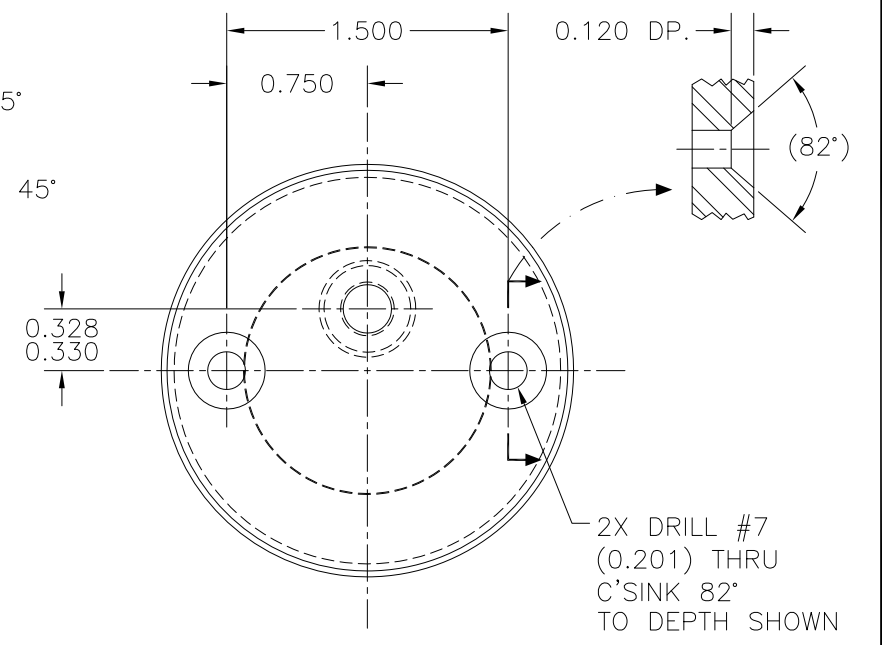
REVISIONS				
NO	DESCRIPTION	DATE	BY	APR/DATE
0	ISSUED FOR MANUFACTURE	05/12/10		
1	REV. TITLE, ADDED NOTE 7	06/02/10		
2	INCREASED MAJ. BORE DEPTH, MODIFIED SEAL POCKET	2/21/11		



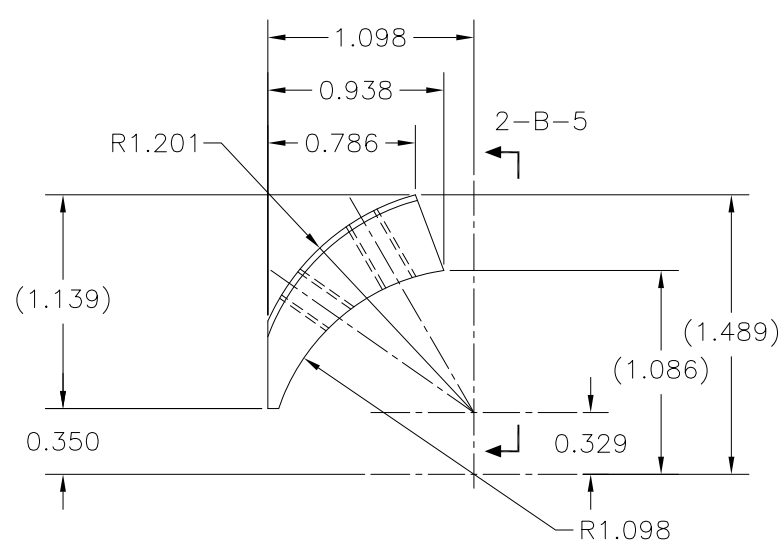
END VIEW 2-C-7
ITEM 1A - CAN BODY
PRELIMINARY MACHINING
REF. 1-C-7



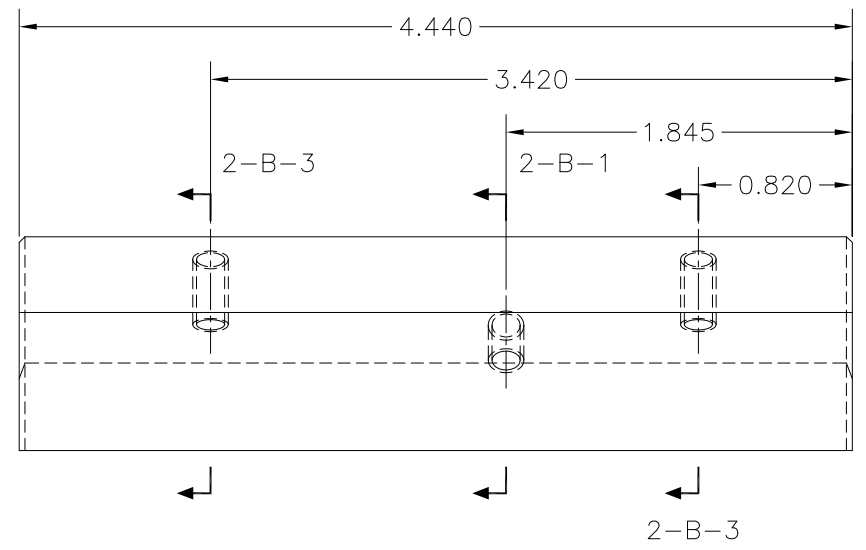
SECTION 2-C-4
REF. 2-D-7



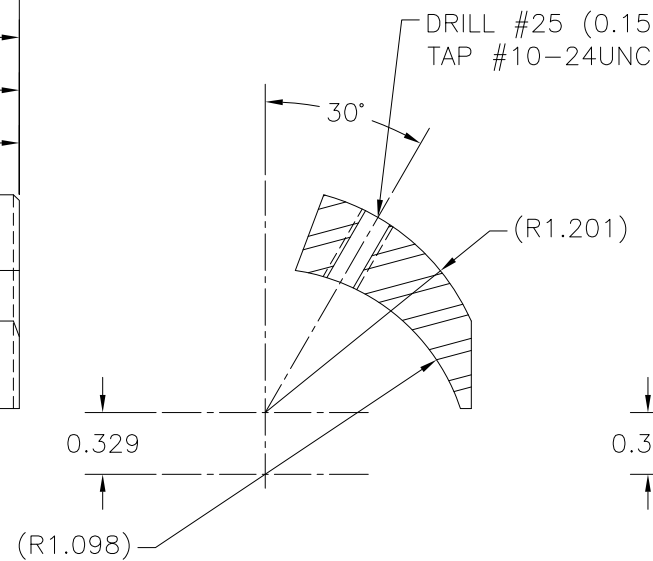
END VIEW 2-C-2
REF. 2-C-3



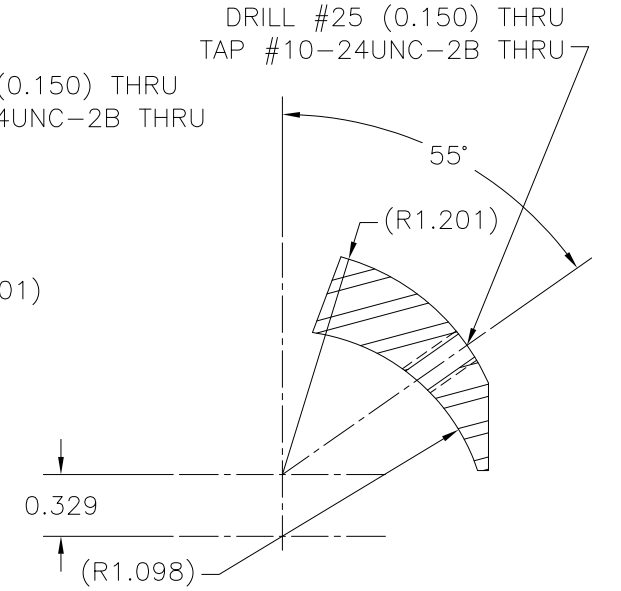
VIEW 2-B-7
ITEM 1B - EAR
PRELIMINARY MACHINING
TWO (2) REQ'D.
ONE (1) AS SHOWN
ONE (1) MIRROR IMAGE
REF. 1-D-6



VIEW 2-B-5
REF. 2-B-7



SECTION 2-B-3
TYP. TWO (2) PLACES
REF. 2-B-5 & 2-A-4



SECTION 2-B-1
REF. 2-B-4

TOLERANCES: UNLESS OTHERWISE SPECIFIED 0.X ± 0.030 0.XX ± 0.010 0.XXX ± 0.005 ANGLES ± 1/2° BREAK EDGES 0.015 x 45° MIN. FINISH 125 [0.010]	PROPRIETARY NOTICE THIS DRAWING AND THE INFORMATION IT CONTAINS ARE CONSIDERED CONFIDENTIAL, AND MAY NOT BE REPRODUCED, COPIED OR USED, IN PART OR IN WHOLE, WITHOUT PRIOR WRITTEN CONSENT.	Integrated Ocean Drilling Program TEXAS A&M UNIVERSITY 1000 DISCOVERY DRIVE COLLEGE STATION, TX 77845	
		SHEET 2 OF 2 SCALE 1:2 BY KM DATE 03/31/10	TITLE MOTOR CAN SYSTEM ERS v.2 ASSEMBLY 3 ERS CHECKED JCS DATE TP